

# ***Location Business Japan 2018***

Event Report

<b>Event</b>	Location Business Japan 2018
<b>Date</b>	June 13 (Wed) - 15 (Fri), 2018
<b>Venue</b>	Makuhari messe
<b>Organizer</b>	Location business Japan Steering Committee
<b>Operation</b>	NANO OPT Media, Inc.
<b>Support</b>	Cabinet Office Space Strategy Office Ministry of Internal Affairs and Communications Ministry of Economy, Trade and Industry Ministry of Land, Infrastructure and Transport National Research and Development Institute of Japan Aerospace Exploration Agency (JAXA) The Association of indoor Messaging Service Visible Light Communications Association Secure Drone Consortium The Institute of Positioning, Navigation and Timing of Japan Japan Web Association Japan Drone Association Japan Drone Consortium Japan UAS Industrial Development Association The Remote Sensing Society of Japan Japan Institute for Promotion of Digital Economy and Community Internet ITS Consortium NIKKAN KOGYO SHIMBUN,LTD. World Wide Web Consortium(W3C)
<b>Co-located Event</b>	Interop Tokyo 2018 Connected Media Tokyo 2018 Digital Signage Japan 2018 APPS JAPAN 2018

## contents

- Outline / Event (P. 2)
- Number of Attendees / Exhibitors (P. 3)
- Exhibitor list (P. 4)
- Visitor Questionnaire Results (P.10~)
- Keynote sessions (P.13)
- Special Exhibition / Stage (P.17)
- Future of NOM events 2018 (P. 19)

# Attendees

## Visitors

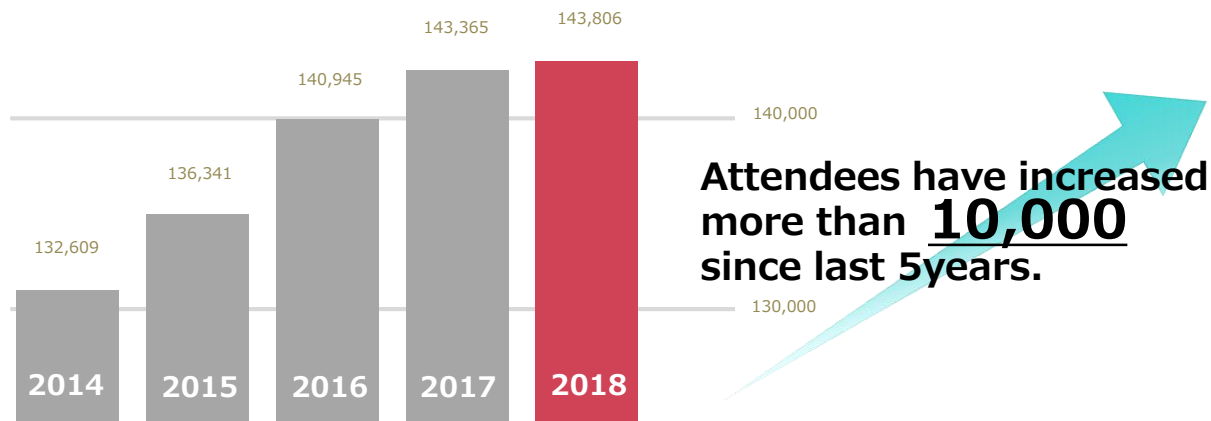
Deta	June 13 (Wed)	June 14 (Thu)	June 15 (Fri)
Weather	Sunny	Cloudy	Rainy
Visitors	<b>40,826</b> (42,780)	<b>49,421</b> (48,714)	<b>53,559</b> (51,871)
Total number of visitors	<b>143,806</b> (143,365)		

※上記数字は展示会入場口で読み取りをした来場者バーコードの1日毎のカウント数です。

※1日のうちに何回入場しても「1名」とカウントされます。ただし、数日にわたり来場した場合は日毎に「1名」とカウントされます。

※including co-located events.

※ ( ) in 2017



## Participate company and group

Total number of exhibitors	<b>509</b> (535)
	<b>1,772</b> (1,395)

※Including co-located events.

※ ( ) in 2017

Average of exhibit space is increasing in 2018.

2017 : 2.6 → 2018

**3.4**

## Location Business Japan 2018

A
AGOOP
AQUA COSMOS
B
Braveridge / Sanshin Electronics
blogwatcher
C
CORE
F
FLIGHTS
Furuno Electric
G
GNSS Technologies
H
HOUWA SYSTEM DESIGN
Harris Geospatial
Hitachi
Honda Motor Co., Ltd.
J
Japan Drone Consortium
K
KogaSoftwareCompany
Kyoto University / Japan Space Systems
M
Magellan Systems Japan / Toyota Tsusho
N
NAVITIME JAPAN CO., LTD.
S
SUBARU / NEDO
Signite
Space Information
T
Taparound, Inc
The National Institute of Advanced Industrial Science and Technology
U
unerry
Z
ZYYX

## Connected Media Tokyo 2018

A
AIC
Akamai Technologies
B
Black Box
C
COSMO SOUND
D
Digital Processing Systems Japan
F
FUJI TELEVISION NETWORK,INC.
G
Geolocation Technology / Digital Element
I
Internet Initiative Japan
J
J-Stream
JAPAN BROADCASTING CORPORATION
JOLLY GOOD
M
Mellanox Technologies / Servants international
Memory-Tech
multiscreentv
N
Nippon Television Network Corporation
O
OZ CREATIVE
P
Palo Alto Networks K.K.
R
radiko
S
SB Creative Corp.
SKY Perfect JSAT
Seiko Solutions
Somethingfun
Spectee
Spectee
T
TOKYO BROADCASTING SYSTEM TELEVISION
TOKYO MX
Two-Tech
tv asahi corporation
U
UNIXON SYSTEMS CO.,LTD

# Exhibitors List

## APPS JAPAN 2018

A
Acroquest Technology
Avelio Systems
aifront
B
BiZright Technology
Bizwind
Brekeke Japan, Inc.
C
COMSYS JOHO SYSTEM
D
Device WebAPI Consortium
DreamOnline
E
Entap
F
FacePeer, Inc.
FaithCreates
Far End Technologies
Fuller
H
HEARTS Technology
hacchu navi
I
IT Access
IX Knowledge Inc.
Image Information System / Implem
i-labo
iCRAFT
J
JUSTWORK
Japan Android Group
L
L is B
LIGHTEC
M
MAGENCY
Micros Software
monstar-lab
N
NC Design & Consulting
NSP
Newphoria
O
Office KAGO
P
PLAID
Q
QOLP
R
Repro
Repro

S
SAMSUNG ELECTRONICS JAPAN
SENQLEAD
SI Agency
SOFTNET
Specified Nonprofit Corporation Research and Development Organization For Wearable Computer
SpriteK Ink.
T
Techfirm Inc
Techno Mind
U
unerry
V
VASARA
VITALIFY
VTI Japan
W
W3C (World Wide Web Consortium)
WCO
WCO
Wearable Device User Group Japan
webrage
Y
Yappli

## Digital Signage Japan 2018

A
AACoop
AGC Asahi Glass
AHA
AIM ELECTRONICS
AIZ CO LTD
ASAHI GLASS
ASAHI WOOD PROCESSING
ASSIST CLIP co.,ltd
AZA Corporation
Advantech
Aecom inc
Atlas advertising agency
alfa digital products
B
B.M. NAGANO CO., LTD.
BCN
BOE Japan
BRIDGELINK

## C

CAD Network Service  
 CORNES Technologies  
 CREA  
 CREST  
 CYBERNET SYSTEMS  
 comnet / FIRST

## D

DIGNSYS  
 Densan System  
 Digital Bank  
 Digital Signage Consortium

## E

ELECOM Group  
 EPSON DIRECT  
 EVERTREE

## F

Fujitsu Marketing

## G

GLOBAL DISPLAY  
 Geo Nexus  
 Good Planning

## H

HAMASHIN GLASS  
 HAYAMI INDUSTRY  
 Hibino Intersound  
 Hokkaido Chizu  
 Hokuyo Automatic

## I

IDK / ARVANICS  
 IMAGENICS / VIDEOTRON  
 INTER BUSINESS BRIDGE  
 IROC CO., LTD.  
 IWATA CORPORATION

## J

JAPAN MATERIAL  
 JXTG Nippon Oil & Energy Corporation

## K

KOA  
 KOBUNDO  
 KOHJINSHA Design  
 KOSHIDA  
 KYODOCOM  
 KYOEI SHOJI  
 Kid'sPlates  
 Kino-mo  
 Kyodo Printing

## L

Life is Style  
 Logicfactory

## M

M2  
 MEDIAEDGE  
 MINATO & DISPLAX  
 MOLDEC  
 Mitomo  
 Mitsubishi Electric  
 Morisawa Inc.  
 mountain studio

## N

NAVITIME JAPAN  
 NDS  
 NIHON FORM SERVICE  
 NIPPON CARBIDE INDUSTRIES  
 NISSHINTOA IWAO / KOHDENSHI TK  
 Newphoria

## O

OPTILED LIGHTING  
 Oar  
 Office Colors

## P

PANORA  
 PDC  
 PHWorks  
 PROTERAS  
 Panasonic / Panasonic System Solutions Japan

## R

RIZeST / PANDASTUDIO.TV  
 RS

## S

SDS  
 SEAN AND STEPHEN  
 SHARP CORPORATION  
 SHENZHEN PULUN ELECTRONICS  
 SIGLAB  
 SOFNETJAPAN  
 STUDIO TECH  
 Sagasaki / BLD Oriental  
 Sakilabo  
 Sanyu Electronic Industrial  
 Shanghai Goodview Electronics Technology  
 Sony Corporation  
 Sony Marketing

# Exhibitors List

## T

TAKENAKA Co Ltd / Arc Ventures

TANSEISHA

TASITEN

TOUCH PANEL SYSTEMS

TRIM

TSUZUKI TECHNO SERVICE

Technoface

TeraState / JUNS

Twitch Japan GK

teamLab

## V

Vacan

## W

Will Smart

Wistron

## Interop Tokyo 2018

## A

A.I. Corporation

A10 Networks

Actworks

Advanced IT Architect Human Resource Development Council

Advanet

AI Business Creation Association

AI Business Promotion Consortium

AIC

AIM ELECTRONICS

Airitech

Akademia Systems

Akamai Technologies

ALAXALA Networks

Allied Telesis

ANRITSU

AP Communications

ARK Systems Co.,Ltd.

Array Networks

Artiza Networks

Asgent

AsiaQuest

ATEN JAPAN

Axis International

## B

BCN

BICSI JAPAN

Black Box

BroadBand Tower

## C

CDNetworks Japan

Chengdu Tiger Microwave Technology Co., Ltd.

Ciena

CINNAMON

Cisco

Cisco / Netrounds

Cisco Systems

Citrix Systems Japan

COGNITEE

Commerce21

Connection Technology Systems Japan

Consortium for Experience Design Support

Couger

Couger / KDDI

Crescent, inc.

CRESCO

CSE

Curvature

Cybersolution, Cybersolution, Inc.

Cylance Japan / Tech Matrix

## D

Daiwa Technical

Data Controls

DataCore Software

DATA-TREK

DATUM STUDIO

Deaps Technologies

Dell EMC

Delta Electronics

DENSO Solutions

Dentsu Digital / beBit

Digital Stacks

D-Link Japan K.K.

DOVA CORPORATION

DYDEN

## E

Embassy of Canada to Japan

Encourage Technologies

Ericsson Japan

eWave Networks

Extreme Networks

## F

FFRI

Fiber 26 Network

FIT Pacific

Focus Systems

Fortinet Japan

FUJIFILM

FUJITSU

Fujitsu Advanced Technologies / Okaya Electronics / Super Micro Computer

Fujitsu Kyushu Network Technologies Limited

Furukawa Electric/ FURUKAWA NETWORK SOLUTION

FURUNO SYSTEMS

Future

FXC

# Exhibitors List

## G

Galactica  
GINGA SYSTEM / LOGICOOOL  
GMO Globalsign

## H

Hagi City  
Harada  
HC Networks,Ltd.  
HGST JAPAN  
Huawei Technologies Japan  
Human Interactive Technology

## I

iB Solution  
IBC Co.,Ltd.  
ICOP I.T.G.  
ILI RESEARCH INSTITUTE  
imatrix  
Impress Corporation  
Incubit  
INFOCOM CORPORATION  
INFORMATION DEVELOPMENT CO., LTD.  
Intel  
Internet Initiative Japan Inc.  
Inventit Inc.  
ISFnet,Inc.  
ISON Technology / Okaya Electronics

## J

Japan Advanced Institute of Science and Technology (JAIST)  
Japan GPU Computing Development Partnership  
Japan Media Systems  
JAPAN MEDIA SYSTEMS / LOGICOOOL  
Japan Registry Services  
Japan Telegaertner  
JENNIFERSOFT  
Juniper Networks  
Juniper Networks K.K.  
Jupiter Technology

## K

K.K. Ashisuto  
Kanagawa Institute of Technology  
Kaspersky  
KBBI&D  
Keio University Cyber Security Research Center  
Keysight Technologies  
Keysight Technologies (Ixia Communications)  
KYOCERA Communication Systems

## L

Laboratory of Hi-Think Corporation  
Lanner Electronics  
LOGICOOOL  
LogicVein  
LTE-X

## M

Macnica Networks  
Mahoroba Kobo  
Mamorio  
Marubeni Information Systems Co.,Ltd.  
Marubun  
McAfee  
MEIKYO ELECTRIC  
Mellanox Technologies / Macnica Altima Company  
Mellanox Technologies / Servants international  
MicroWorld  
MISH INTERNATIONAL  
Monthly EMC  
MOTEX

## N

NAGASE  
NANABOSHI ELECTRIC MFG  
Napatech  
Napatech Japan  
Nara Institute of Science and Technology  
National Institute of Information and Communications Technology  
NEC Corporation  
Net Care Service Co.,Ltd.  
Netcope Technologies  
NETSCOUT Arbor / Toyo Corporation  
Network Value Components  
Network / Carbon Black Japan  
NHN JAPAN  
Nichei International  
Nippon Jimuki / LOGICOOOL  
Nippon System Kaihatsu  
NISSHO ELECTRONICS  
NITTO KOGYO  
NKIA  
Nomura Research Institute  
Novars  
NRI Securetechnologies  
NTT  
NTT Advanced Technology / F5 Networks Japan  
NTT Communications  
NTT COMWARE  
NTT DATA INTELLILINK  
NTT TechnoCross  
NTTTPC Communications  
Nutanix Japan

## O

OGIS-RI  
OMRON FIELD ENGINEERING .CO.,Ltd.  
OpenFog Consortium  
O'Reilly Japan  
ORIZON Systems  
Otsuka  
Outsourcing Technology



# Exhibitors List

## P

Palo Alto Networks K.K.  
Panasonic Solution Technologies Co., Ltd.  
Panduit  
PARONGO  
Penetrate Of Limits  
Persol Carrer  
PFU  
Portwell Japan

## R

Rakudou  
RAKUS  
Regional BWA Promotion Association section by Hanshin  
Cable Engineering  
RICOH JAPAN / LOGICOOL  
Riverbed Technology

## S

SAKURA Internet  
Sanwa Comtec  
SAS Institute Japan  
SB Cloud  
SB Creative Corp.  
SCSK  
SCSK/Yamaha  
SDC  
SDM Consortium  
Second Earth Labo  
Secure IoT Alliance  
SecureBrain Corporation  
Seiko Solutions  
Sennheiser Japan  
SHARP  
Sky  
SKY Perfect JSAT  
Soft Service  
SoftBank  
SOFTCREATE  
Solarflare Communications Inc. / Brilliant Technologies  
Company MACNICA  
Soliton Systems K.K.  
SonicWall Japan  
Sony Biz Networks  
Spirent Communications / Toyo Corporation  
SRA OSS, Inc. Japan  
Stock Mark  
Sumitomo Electric Information Systems  
Systema Corporation

## T

TAIYO YUDEN  
Tamagawa University, Quantum ICT Research Institute  
TANKFUL Co. Ltd.  
TechnoBlest / ArgiΣ  
Terilogy Worx Corporation  
The Univ. of Tokyo: Network Muscle Learning  
ThousandEyes  
TileFlow Japan  
TIS / Axsh  
Tokyo Century / Bplats  
Toshiba Memory Corporation  
TOYO  
TP-Link Japan  
Trend Micro  
Trustwave Japan

## V

Vasara  
V-cube / LOGICOOL  
VeEX / MainTechnology  
Viascope  
VINX  
Virtual Open Systems, SAS  
VMware  
VOID ROUTER SYSTEMS  
VSN  
VTI Japan

## W

Waseda University  
WatchGuard Technologies  
WaveSplitter Japan  
Western Digital Japan  
Whiteboard  
WinMagic Japan

## X

XACK  
Xshell  
X-TRANS

## Y

Yamagiwa Lab at University of Tsukuba / Stream  
Technology  
Yamaguchi Prefectural Government  
Yoshidumi Information

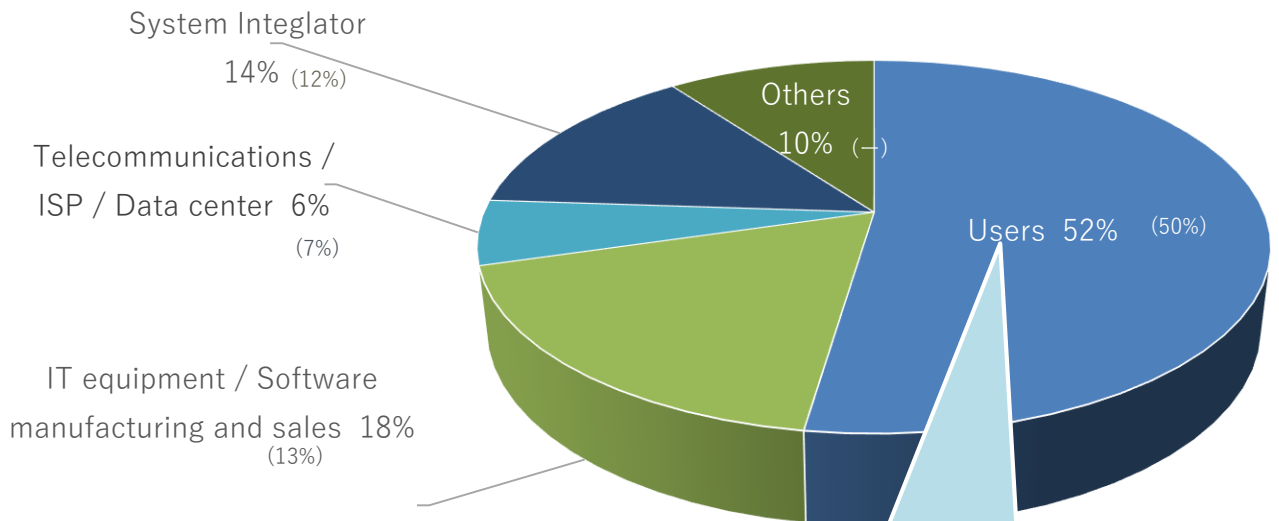
## Z

Zabbix Japan LLC  
Zero Networks, Inc.  
ZOHO Japan

## Type of business

\* () in 2017

The total number is not necessarily the result of 100% because it only lists comparable figures in the results of last year New questionnaire items and other items are not compared.



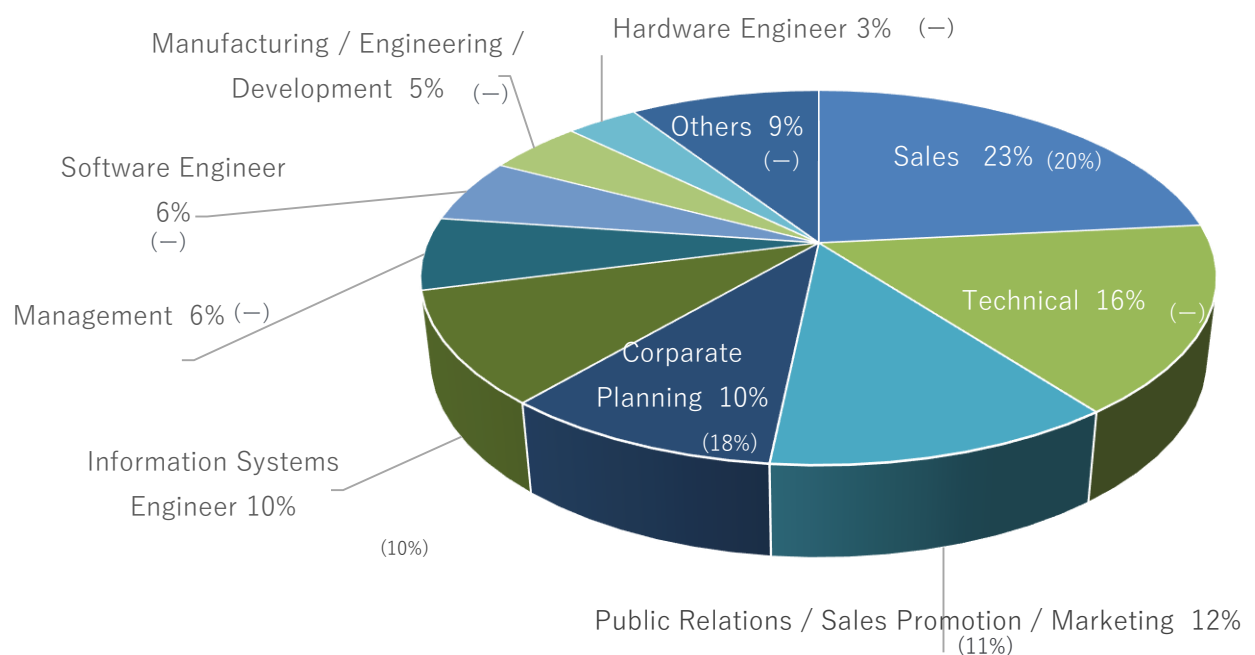
**User company**  
 Manufacturing / service industry / Enterprise / Transportation / Logistics / Construction / Property / Trading / Wholesale / Retail trade (Non-IT) etc..

More than  
**50%**  
 User companies

## Job function

\* () in 2017

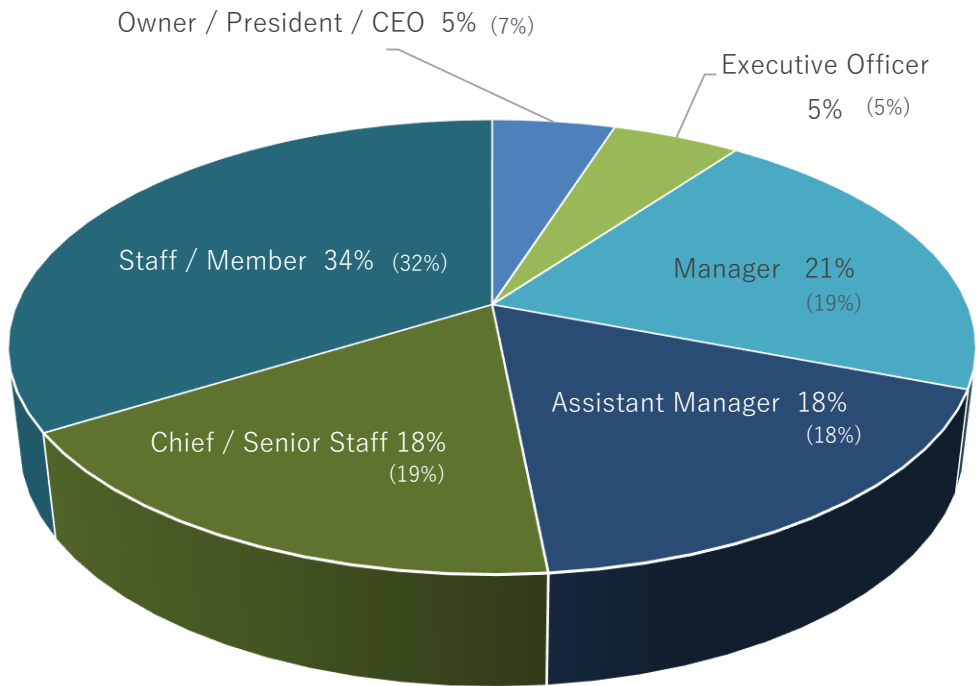
The total number is not necessarily the result of 100% because it only lists comparable figures in the results of last year New questionnaire items and other items are not compared.



# Questionnaire Results

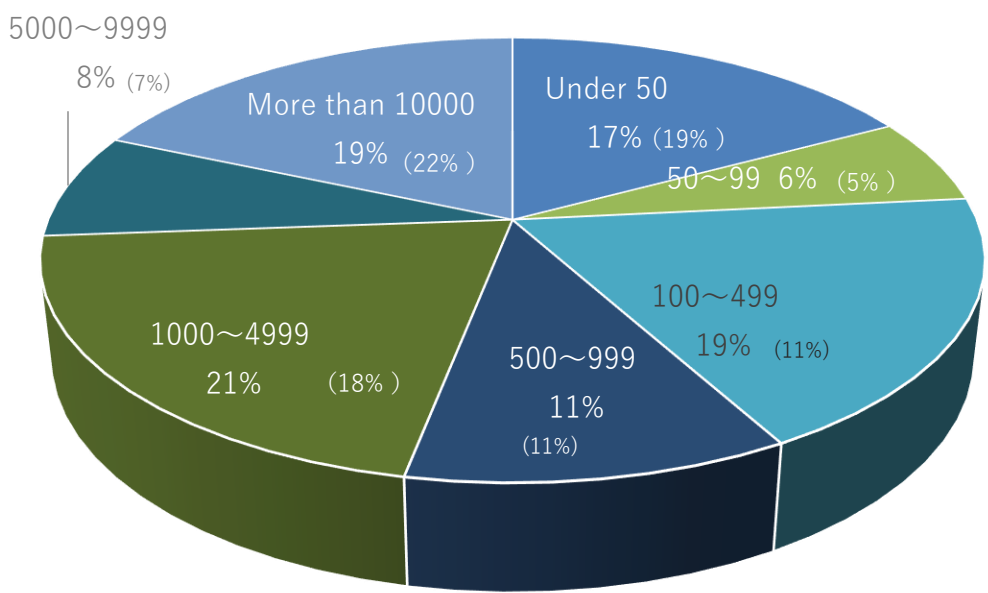
## Position

※ ( ) in 2017



## Number of Company

※ ( ) in 2017



# Keynote Sessions

**KB-07**

**June 13 (WED) 15:15-15:55**

**Block Chain**

**Blockchain technology visualizes the location and life-log information  
Second layer reveals the invisible structure of the local community**

Dr. Hitoshi Okada

National Institute of Informatics

Associate Professor, Information and Society Research Division



**KB-09**

**June 14 (THU) 9:35~10:15**

**Interop**

**APPS**

**Next Internet & Space & Startups  
The Leading edge of Growing up new space business.**

Lena Okajima

ALE Co., Ltd. CEO and Founder,

Masayoshi Boku

Bascule Inc. Representative Director,

Masayasau Ishida

A.T. Kearney Principal

Deck Hashimoto

SKY Perfect JSAT Corporation

New Business Promotion Division Corporate Planning & Strategy Group



**KB-11**

**June 14 (THU) 11:25~12:05**

**Utilization of industrial big data including Connected Industries and  
map information**

Yasuhiro Maeda

Deputy Director-General, Commerce and Information Policy Bureau

Ministry of Economy, Trade and Industry, Japanese Government



# Drone Solution demo Area

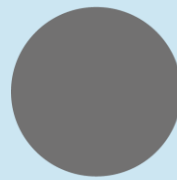
We have located the special area to know an aerodynamic performance of technology and how indispensable for drone flight in Location Business Japan 2018.

●Partnered by●



# Events list

**in 2019**



**Location  
Business  
Japan 2019**

Date

**June 12(Wed)~14(Fri), 2019**

Venue

**Makuhari Messe**

## September, 2018

**ネット&NET & SMARTPHONE COMMERCE  
スマートフォンスマートフォンのコマース**

**Application  
Performance**  
アプリケーション・パフォーマンス

【 Date / Venue 】 Sep.13 (Thr), 2018 @JP Tower Hall & Conference, Tokyo

**IoT World  
Conference**  
Internet of Things

**金融ICT  
カンファレンス**  
金融ICT

**業務自動化  
カンファレンス**

**Autonomous Driving  
&  
Connected Car  
Conference 2018**

【 Date / Venue 】 Sep.14 (Fri), 2018 @JP Tower Hall & Conference, Tokyo

## October, 2018

**Security Days**

**Email  
Security  
Conference**  
2018 | Tokyo / Osaka

【 Date / Venue 】 Osaka : Oct. 1 (Mon), 2018 @Gran front, Osaka  
Tokyo : Oct. 3 (Wed) - 5,(Fri), 2018 @JP Tower Hall & Conference, Tokyo

**Contact us →**  
(NANO OPT Media, Inc.)



**03-6258-0590**



**sales-info@f2ff.jp**