



# **APPS JAPAN**

---

## **Event Report**

## ◆ Index

- Event Profile (P1)
- Exhibitors List (P2~)
- Visitor Profile and Statistics (P9~)
- Keynotes (P11~)
- Live Entertainment Japan – PREVIEW – (P13)
- APPS Pavilion&Seminar(P14)
- APPS Organizer Pavilion (P15~)
- Scene of the event (P17~)

## ◆ Event Outline

Event	APPS JAPAN 2017
Dates	June 7 (Wed.) - 9(Fri.) ,2017
Hall	Makuhari Messe (Chiba, Japan)
Organizer	APPS JAPAN Steering Committee
Management	NANO OPT Media, Inc.
Supported by	Japan Web Solution Design Association Mobile Content Forum NPO wearable computer research and development mechanism Wearable Device User Group Japan
Co-located events	Interop Tokyo 2017 Connected Media Tokyo 2017 Digital Signage Japan 2017 Location Business Japan 2017

## ◆ The Number of Visitors

\*including co-located events

Dates	June.7 <sup>th</sup> (Wed.)	June.8 <sup>th</sup> (Thu.)	June.9 <sup>th</sup> (Fri.)
Weather	Cloudy	Fine	Fine
# of Visitors ( ) 2016	<b>42,780</b> (40,615)	<b>48,714</b> (47,791)	<b>51,871</b> (52,539)
Total	<b>143,365</b> (140,945)		

## ◆ Number of Exhibitors

\*including co-located events

# of Exhibitors ( ) 2016	<b>535</b> (529)	# of booth spaces ( ) 2016	<b>1,395</b> (1,388)
-----------------------------	------------------	-------------------------------	----------------------

## APPS JAPAN 2017

### A

Acroquest Technology  
Advanced Soft Engineering  
aifront  
Akademia Systems  
APP Cooking  
ATGS

### B

Be&Do  
BITS  
BiZright Technology  
Bizwind  
Brekeke Japan  
BroadVision Japan

### C

CData Software  
ComDesign  
Cross Communication

### D

Denseisirus  
Device WebAPI Consortium  
DreamOnline

### E

Entap  
ESUKEI  
EXEED

### F

Faber  
FULLER  
FUTURE APPLICATION

### H

hacchu navi

### I

i-labo  
Image Information  
INFOCOM  
Informatix  
IX Knowledge

### J

Japan Android Group  
Japan Business Lead  
JUSTWORK

### K

KANAME  
KCC  
KDDI Web Communications

### L

L is B

### M

MICROS SOFTWARE  
MindFree  
Monstar Lab  
Morisawa  
Mozilla Japan

### N

nanoconnect  
NC Design&Consulting  
NCS&A  
NDS / SEC  
Newphoria  
NTT Communications

### P

PLAID

### Q

QOLP

### R

Repro  
Research Institute of Systems Planning

### S

SENQLEAD  
SI Agency  
SIC  
SoftBank  
SOFTNET ORPORATION  
SOLXYZ  
Specified Nonprofit Corporation Research and Development Organization For Wearable Computer  
Spiritek  
Supreme System  
System Science

### T

Techfirm  
Too

### V

VASARA  
VietIS Software Japan  
Vuzix

### W

W3C (World Wide Web Consortium)  
Wearable Device User Group Japan  
webrage  
Willink System

### Y

Yappli  
YEC Solutions  
YUMEMI

## Digital Signage Japan 2017

### A

ADTECHNO  
AECOM  
AHA  
ALPHA TECHNOLOGY  
ASAHI WOOD PROCESSING  
Atlas advertising agency

### B

BCN  
BenQ Japan  
BOE Japan

### C

CAMEL JAPAN  
comnet

### D

DATABROAD  
Digital Signage Consortium

### E

E3  
ELSA Japan  
EPSON DIRECT  
EVERTREE

### F

FIRST

### G

Good Planning

### H

Hayami Industry  
Hibino Intersound  
HYOJITO

### I

IMAGENICS  
Item

### J

Japan Digital Information Display  
Japan Machine Service  
Japan Material/Prism

### K

KABOB CREATIVE JAPAN  
KAKEZAN  
KOBUNDO  
Kordz Japan  
Kyodo Printing  
KYODOCOM

### L

Live2D  
Logitech INA Solutions

### M

Marvel Digital Limited  
MEDIAEDGE  
Meikoshokai  
MITOMO  
Mitsubishi Electric  
Movable Trade Networks  
MUSTARDSEED

### N

N.GeN  
NANASAI  
NAVITIME JAPAN  
NDS  
NEXTY Electronics / SMART COM. Laboratories  
NGC  
NIPPON CARBIDE INDUSTRIES  
NISSHINTOA IWAO  
NOVIUS  
NTT TechnoCross

### O

Oar  
Office Colors

### P

Panasonic / Panasonic System Solutions Japan  
Pbsystems  
PD System  
PDC  
PROTERAS

### R

RS

### S

Sagasaki  
SDS  
SHARP  
Shinko Shoji  
ShotVision  
SOFNETJAPAN  
Sony Marketing (Japan)

### T

TeraState / JUNS  
Touch Panel Systems  
Trim  
TSUZUKI TECHNO SERVICE

## Digital Signage Japan 2017

V
Value up
W
WELL ON
Y
Yasukawa Information Kyushu

### Overseas Exhibitors

Coretronic Group Young Lighting Technology
GSD
SHENZHEN PULUN ELECTRONICS
Tri-Net Technology
Zalcom

## Location Business Japan 2017

D
DENSO
H
Hitachi Industrial Equipment Systems
Hitachi Solutions
Hitachi
Hokkaido Chizu
M
Mitsubishi Electric
N
National Institute of Advanced Industrial Science and Technology (AIST)
NIKKEN LEASE KOGYO
O
OYO Resources Management
P
PDR Benchmark Standardization Committee
Q
Quasi-Zenith Satellites System Services
R
Remote Sensing Technology Center of Japan
U
Ubisense
unerry

## Connected Media Tokyo 2017

A
Access Vision
Artisan
C
Cosmo Sound
D
Digital Processing Systems Japan
E
EVC
F
FUJI TELEVISION NETWORK
I
IT Access
J
JapanCableCast
JOC DN
JOLLY GOOD
M
Microsoft Japan
MITOMO
multiscreentv
N
Nekojarashi
Nippon Television Network
O
Ooyala
R
radiko
S
SkillUp Video Technologies
Spectee
T
TOKYO BROADCASTING SYSTEM TELEVISION
TOKYO MX
tv asahi

## Interop Tokyo 2017

### A

A.I.Corporation  
A10 Networks  
ADVA Optical Networking  
Advanced IT Architect Human Resource Development Council  
AI Business Creation Association  
AIM ELECTRONICS  
ALAXALA Networks  
Allied Telesis  
ANRITSU / Anritsu Networks  
AP Communications  
APRESIA Systems  
aptpod  
Arbor networks / Toyo  
ARK Systems  
Array Networks  
Artiza Networks  
Asgent  
AsiaQuest  
ATEN JAPAN

### B

BCN  
BEAT Man cube  
Belue Creative  
Bit-isle Equinix Technology Service  
Bitrieve  
Bplats  
Brains Technology  
BroadBand Tower  
Brocade / StackStorm

### C

Check Point Software Technologies  
Ciena  
Cisco Systems  
Citrix Systems Japan  
Clearswift  
Computermind  
COMSQUARE  
Connection Technology Systems Japan  
Contents / Luci  
Coriant  
CRI Middleware  
CSE  
CyberArk Software (Japan)  
Cybereason Japan / Softbank  
Cylance Japan / Tech Matrix

### D

Dai Nippon Printing  
Daiwa Technical  
Data Controls  
data dock  
DATA-TREK  
DATUM STUDIO  
Dell EMC  
Delta Electronics (Japan)  
DENSO  
dit  
D-Link Japan  
DOVA  
DYDEN

### E

Encourage Technologies  
Enea  
Extreme Networks

### F

F5 Networks Japan  
Fiber 26 Network  
FIT Pacific  
forescout  
Fortinet Japan  
FUJITSU  
FUJITSU Advanced Technologies Limited  
/ Super Micro Compute / OKAYA ELECTRONICS  
Fujitsu Kyushu Network Technologies Limited  
FURUKAWA ELECTRIC  
/ FURUKAWA NETWORK SOLUTION  
FURUNO SYSTEMS  
FXC

### G

GEDigital  
Glean Corporation  
GLOBAL CLOUD XCHANGE

### H

Harada  
HGST Japan / SanDisk  
Hitachi Systems  
HOUWA SYSTEM DESIGN  
Huawei Technologies Japan

### I

IBC  
iBSolution  
ICOP I.T.G  
Ikeriri Network Service  
Impress Corporation  
INFOCOM  
INFORMATION DEVELOPMENT / Seceon

## Interop Tokyo 2017

I
intel
IPNetfusion
ITM
Ixia Communications
J
Japan Advanced Institute of Science and Technology (JAIST)
Japan Media Systems
Japan Registry Services(JPRS)
JENNIFER SOFT
Johokobo
Juniper Networks
Jupiter Technology
K
Kanagawa Institute of Technology
Kanematsu Electronics / Riverbed Technology Japan
KDDI / Cisco Systems
Keio University
Keio University Cyber Security Research Center
Keychain
Kimoto express electronic design
KYOCERA Communication Systems / KCCS Mobile Engineering
L
LAC
Lenovo Enterprise Solutions
LOGICOOL
LogicVein
Lookout Japan
M
Macnica Networks
Macnica Networks / Splunk
Mahoroba Kobo
Marubeni Information Systems
Marubeni OKI Network Solutions
MARUBUN
MEDIA PLUS
MEIKYO ELECTRIC
MellanoX Technologies Japan / Macnica ALTIMA
METAMAKO / INTELLIGENT WAVE
Mishima OA System
Mitsubishi Paper Mills / TOUCHCARD
MouseComputer
N
NAGASE
NANABOSHI ELECTRIC MFG
Napatech Japan
NARA Institute of Science and Technology

N
National Institute of Information and Communications Technology
NEC
Net Care Service
NETREQS
Netscout
Network Value Components
Nextech
Nichiei International
NIFTY
Nippon RAD / Clearswift
Nippon System Kaihatsu
Nippon Techno Labo
NIPPON TELEGRAPH AND TELEPHONE
NIPPON TELEGRAPH AND TELEPHONE EAST / Cisco Systems
NISSHO ELECTRONICS
NITTO KOGYO
NRI SecureTechnologies
NTT Advanced Technology
NTT Communications
NTT Communications / Cisco Systems
NTT Network Innovation Laboratories
NTTPC
O
OGIS-RI
OneBridge
OPTiM
O'Reilly Japan
ORIZON Systems
OTSUKA
P
Palo Alto Networks
Panasonic Eco Solutions Networks
Panduit Japan Branch
Parongo
Pasona Tech
Path Finder
PFU
Picture Code
PioneerVC
Plat'Home
Portwell Japan
Pulse Secure Japan
Pulse Secure Japan / Macnica Group ( Macnica Networks)

## Interop Tokyo 2017

### Q

QNAP / Force Media

### R

Rakudou

Raritan Japan

Reconomical

/ ASTROTECH SOFTWARE DESIGN STUDIO

Red Hat

Regional WiMAX Promotion Association section  
by Hanshin Cable Engineering

Riverbed Technology Japan

### S

S&I

SAMURAIZ

SAMURAIZ / Darktrace

SB Creative

SCSK

SCSK / Yamaha

Seceon / INFORMATION DEVELOPMENT

Secure Brain

SecureDB Japan

SEIKO Solutions

SELTECH

Sennheiser Japan

SHARP

Sky

SMS | CURVATURE

Soliton Systems

Soltec Japan

SonicWall Japan

Sonix

Sony Biz Networks

Spirent Communications / Toyo

Sprinklr Japan

SRA OSS

SUMITOMO DENSETSU / IT Solution Services

Sumitomo Shoji Machinex

Systema

### T

Tamagawa University, Quantum ICT Research Institute

TANKFUL

TECHNOL

Tenable Network Security

TileFlow Japan

Tokyo Electron Device / Netskope

TOMORROW NET

Toshiba Corporation Industrial ICT Solutions

Toshiba Corporation Storage & Electronic Devices  
Solutions

Toyo

Trend Micro

### U

UNIADDEX

### V

vARMOUR

Veeam Software

VeEX / MainTechnology

ViaScope

VINX

Viptela

VMware

VOIDROUTER SYSTEMS

VSN

### W

Waseda University

WatchGuard Technologies Japan

WaveSplitter Japan

Web Service Development

Will Smart

WinMagic Japan

### X

XACK

X-TRANS

### Y

Yamaguchi Prefectural Government

Yaraku

### Z

Zabbix Japan

Zero Networks

Zerto Japan

ZOHO Japan

## Interop Tokyo 2017

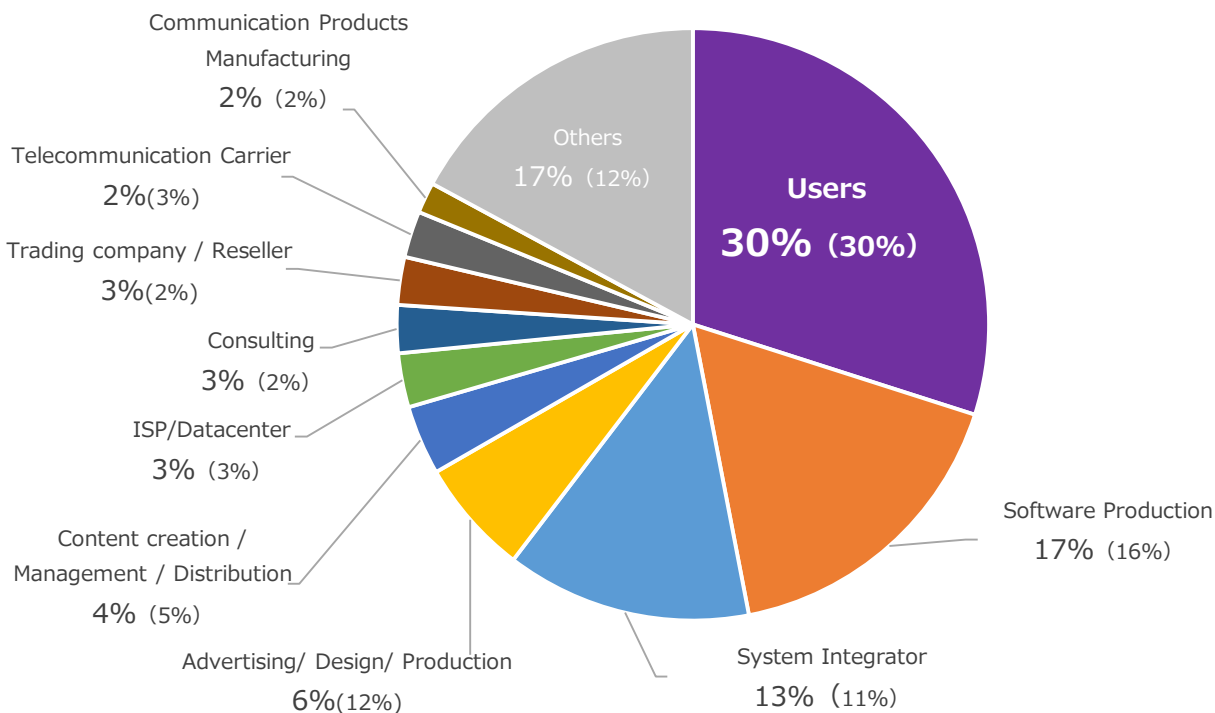
### Overseas Exhibitors

6WIND S.A
CADian Soft
Cambium Networks
DATABANK SYSTEMS
eGlobal Systems
eWave Networks
FKII(The Federation of Korean Information Industries)
Injungbo
Interop China
Netcope Technologies
Netskope
NKIA
Office Expo Asia
QUOPIN
RSUPPORT
SOLTECH
SOMEBODY
Ubibase
Velis IT Systems
Virtual Open Systems
WineSOFT

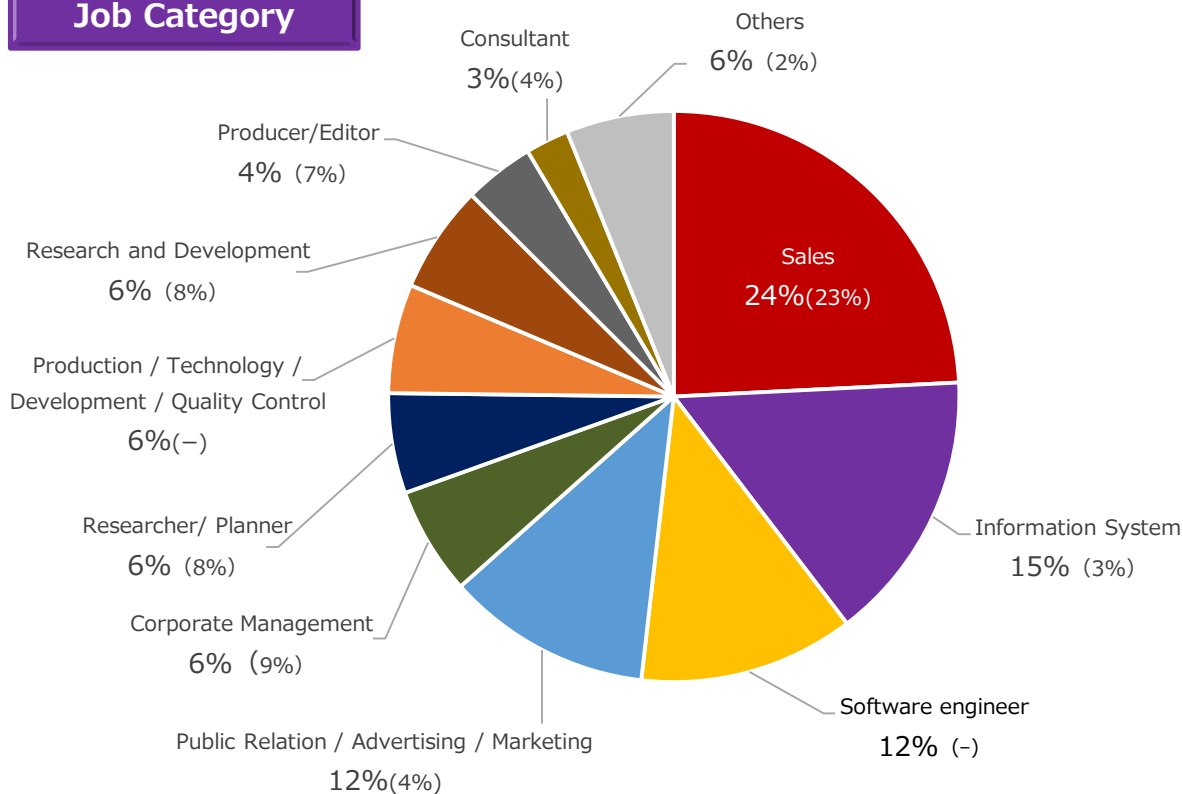


\* Percentage in ( ) is the record of 2016.

## Type of Business

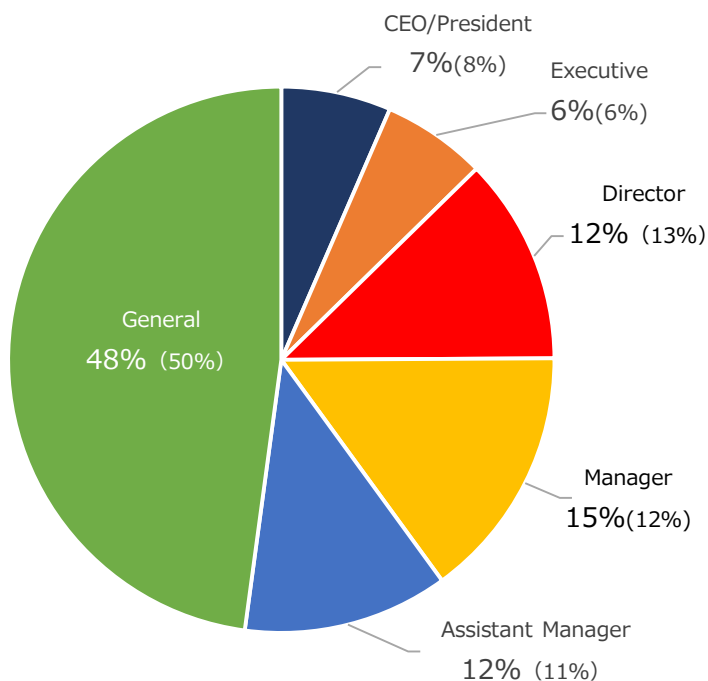


## Job Category



\* Percentage in ( ) is the record of 2016.

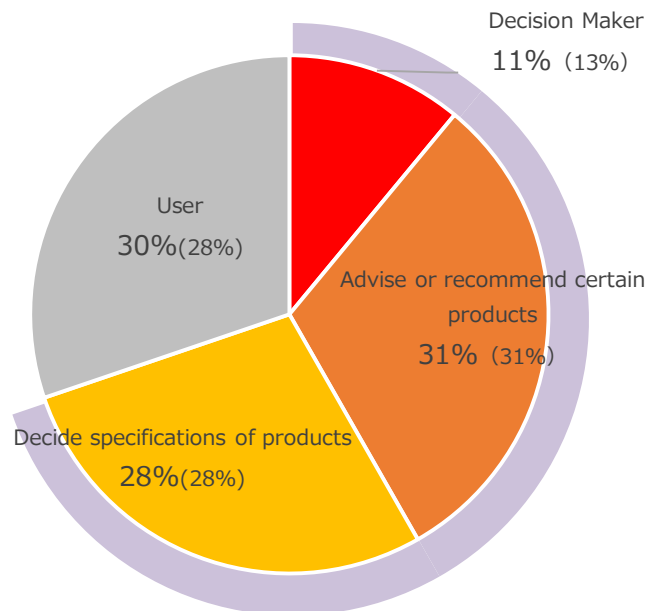
## Job Title



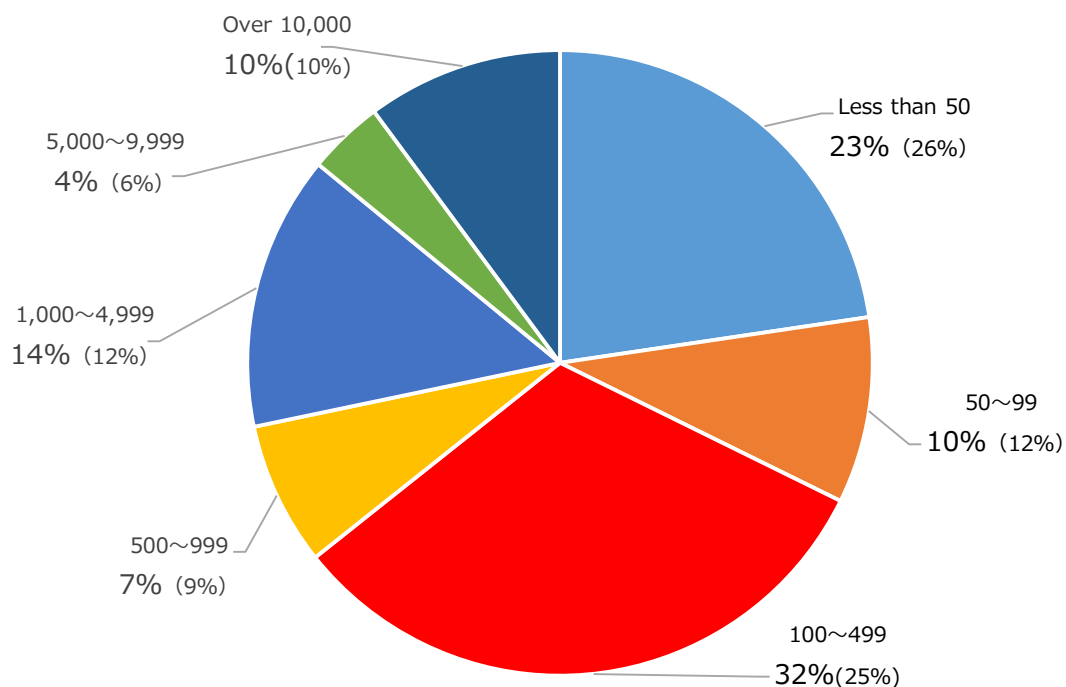
## Purchase Role

Purchase Role  
All Percentage

**70%**



## Number of Employee



**KA-07** June 7(Wed.) 15:15-15:55

## Reason why Mastodon was made

### <speaker>

Eugen Rochko

Mastodon's creator

\* Remote appearance by Skype

Ken Washikita

General Manager,

Sakura Internet Inc.

Research Center

Ayaka Ikezawa

Talent

### <moderator>

Satoshi Endo

Director, Senior Research Fellow

KADOKAWA ASCII Research Laboratories, Inc.



**KA-16** June 8(Thu.) 16:10-16:50

## VR changes the World?

### <speaker>

Atsushi Fukuda

Sony Digital Entertainment

President



**KA-17** June 8(Thu.) 18:00-20:00

## LEJ Night (Live Entertainment Japan Night)

Is there new market if live entertainment events use more innovative Technology?  
This is the brand new event where the live event industry professionals meets together to expand the market.



【 Special cooperation 】

Digital Signage Consortium

Japan Android Group

Specified Nonprofit Corporation Research and Development Organization For Wearable Computer

Wearable Device User Group Japan



**KA-19** June 9(Fri.) 10:30-11:10

## Android meets TensorFlow: how to accelerate your app with AI

<speaker>

Google Inc.

Staff Developer Advocate

Kaz Sato

[sponsors] Google Inc.



## ◆ Live Entertainment Japan – PREVIEW –

# LEJ2017

Live Entertainment Japan  
-PREVIEW-

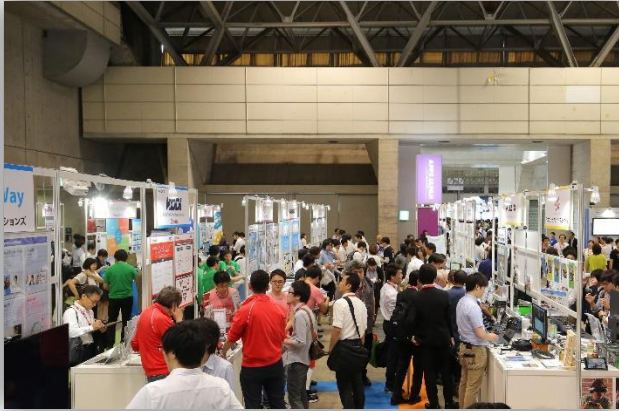
New project to create a market of Live entertainment × Technology.

At the LEJ Night, the live demonstration was performed with the latest technology such as wearable, VR, motion captures and 4K live streaming. We shared the possibilities and challenges with audiences by the actual live performance.

## ◆ Wearable device fashion show

◆ - The world of entertainment created from now -  
Live performance & talk session

## ◆ Pavilion



## ◆ Seminar



## ◆ WebRTC Pavilion

WebRTC is an innovative technology that can add real-time communication to applications and Web sites. We introduced various application examples spreading not only to video and voice communication but also to IoT and robotics.

### Sponsorship



## ◆ Wearable Pavilion

In APPS JAPAN 2017, we implemented an exhibition titled "Wearable Pavilion" aiming at further development of the future wearable device industry.

### Cooperation

Specified Nonprofit Corporation Research and Development Organization For Wearable Computer  
Wearable Device User Group Japan  
Japan Android Group



## ◆ WEB SHIP - Web based Adventure Life -

In the IoT era when digital converges to analog devices, It can be said that not only the old technologies of embedded product developers but also the times of connecting products, services, etc. with the power of Web and application developers.

In this corner, DIY with the camper "WEB SHIP"

"Do-It-Yourself" and "the adventure life of a nomadic hacker James who enjoys a journey" on the theme of the concept exhibition of "self-made IoT" that utilizes user-friendly open Web technology and personal Web data.

In addition to collaboration between goods and lifestyle matched individuals and the Internet, on the premise of migration and change, dynamically changing behaviors while closely following the lands and seasons to visit, IoT to make improvised functions each time We proposed a possibility.



### Cooperation

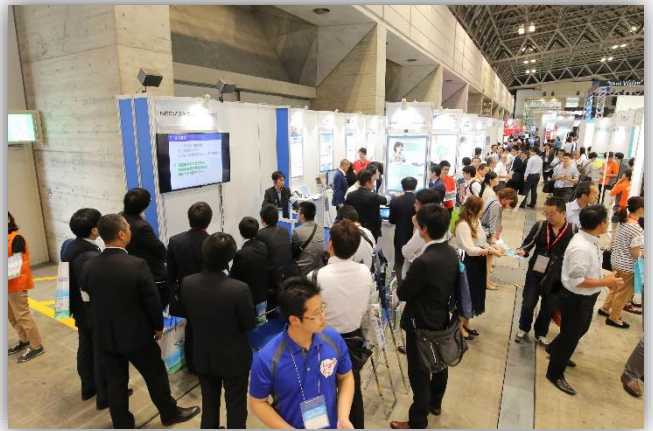
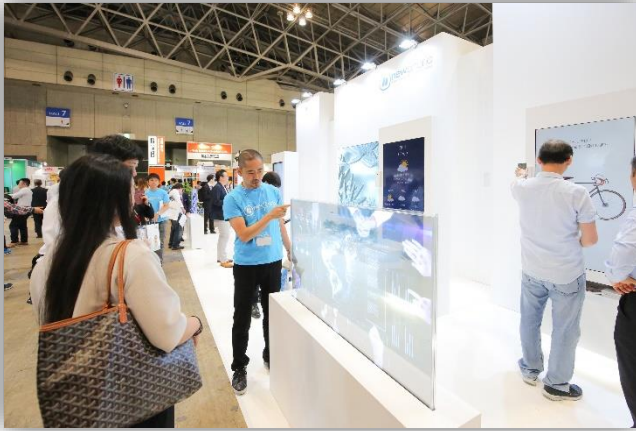
Newphoria  
Mozilla Japan

### Equipment cooperation

OKINAWA CELLULAR TELEPHONE  
KDDI Research







# **APPS JAPAN**

アプリジャパン2017

## **APPS 2018 held decision !**

June 13 (Wed.) -15 (Fri.) ,2018  
MAKUHARI MESSE (CHIBA , JAPAN)

Mail to : [contact@f2ff.jp](mailto:contact@f2ff.jp)